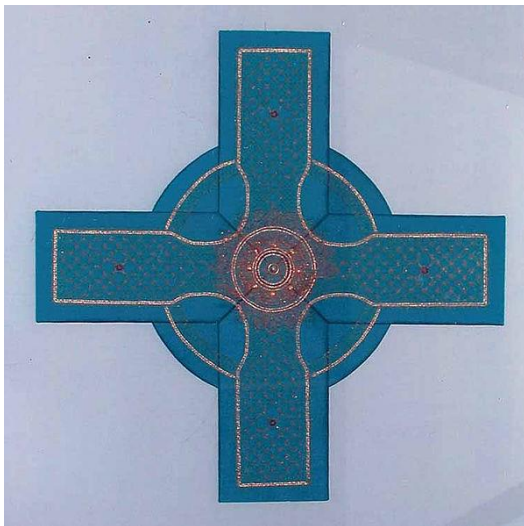


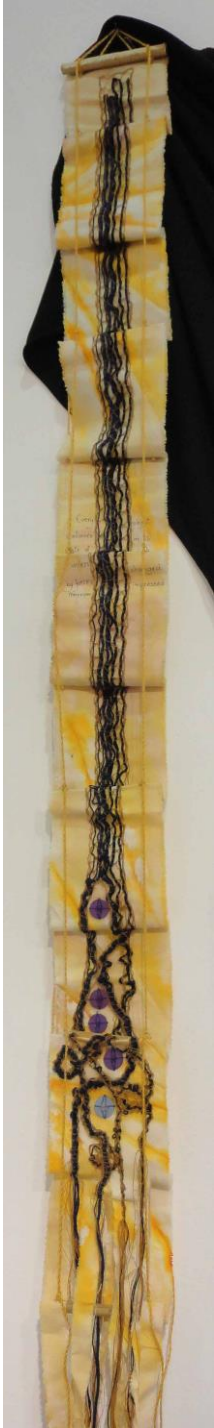
Wood ghosts
by Anne Dyer



You can't stop things growing
by Anne Dyer



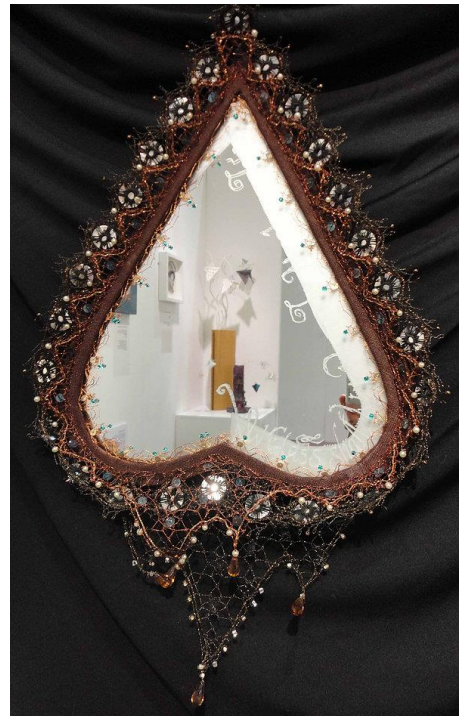
Cross
by Anne Dyer
Copper wire and lurex cross 137x137cm



Line
by Anne Dyer
15x180
Exhibited at Shape Shifting, 2014



Metamorphosis
by Anne Dyer
Revolving unit showing the changes from frog spawn to frog, from circle to flower in geometry and thread. Various lace methods.
60 x 30
Exhibited at Shape Shifting, 2014



My glass shall not persuade me I am old
by Anne Dyer
Design developed from study of triangles. Copper wire lace.
30 x 40 x 40
Exhibited at Shape Shifting, 2014



Child and her dog

by Anne Dyer

Split ply figures are a fairly recent development by Peter Collingwood and me. I love trees and was drawn to this as my site. I thought a child in its branches looked natural. The dog just wanted to be there. Split ply in cotton hauser.

Exhibited at Inside Out, 2010

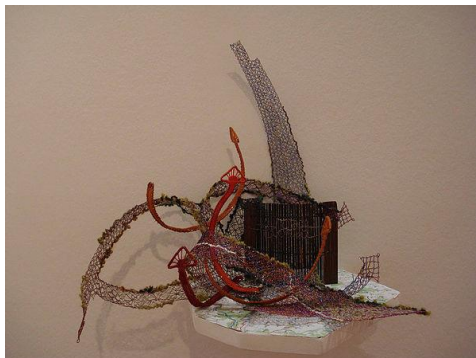


Divergence of techniques

by Anne Dyer

Moving in stages from conventional Torchon through variations of style and technique; adding experimental tating, dye, foiling and embroidery. H70cm, W15cm.

Exhibited at Divergence, 2008



Diversion

by Anne Dyer

You are driving peacefully along a road far from home and come to a 'Road Closed'. At the next junction, there is no sign, you twist and turn guessing a likely route, the sun is in, the minor roads are not on your map. You are lost!. 30cm x 30cm x 30cm.

Exhibited at Divergence, 2008



Spiders in a barn

by Anne Dyer

Exhibited at Lace in a Barn, 2005



Full fathom five

by Anne Dyer

'Of his eyes are pearls made' inspired this interpretation of two pages from the sketchbook. H46cm, W152cm.

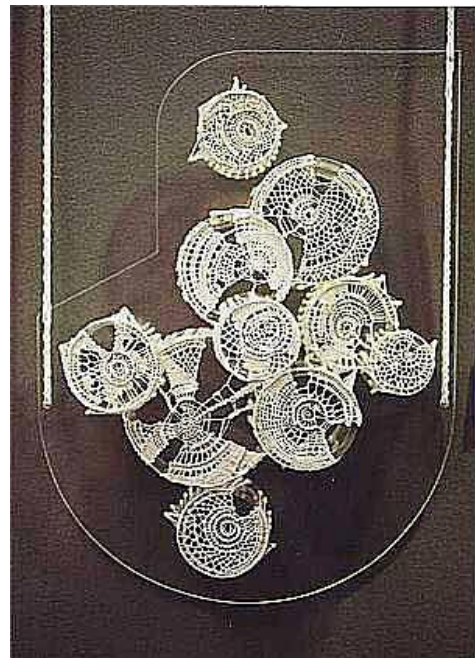
Exhibited at Divergence, 2008



Cleave the wood and I am there
by Anne Dyer
One of a series of seven 'floorboard' hangings featured in the
exhibition
Exhibited at Caught by a Thread, 1999



Where have all the flowers gone
by Anne Dyer
Exhibited at Lace in a Barn, 2005



Wood ghosts
by Anne Dyer
Exhibited at Caught by a Thread, 1999